

BLEND Switch PRO (Single Live)

Battery SL™ the most stable single live solution



BLEND Switch PRO (Single Live)





01
LESS IS MORE

02
UNDERSTAND YOU

03
QUALITY WITH PRIDE

04
MORE CHOICE

01 LESS IS MORE

Simple and Good Design

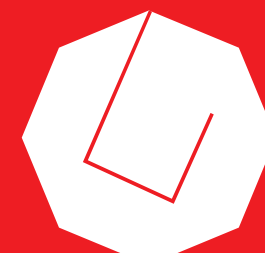
Inspired by classic modernist design

Drawing inspiration from the minimalist design of Farnsworth House, which is a classic modernist building. The switch integrates classic and modern, art and craft perfectly.





reddot
2022



Contemporary **Good** Design

WINNER 2021









01 LESS IS MORE

Simple and Good Design

Large and Flat Panel

Classic modernist design

Fine LED Lamp for Interspersion

Indicate the on/off status of light, and bring delicate and fashionable elements to the switch

Borderless Design

Borderless design to make the smart switch and wall fit perfectly, shaping the new concept of space aesthetics.



02 UNDERSTAND YOU

User-friendly upgrade

DIY Magic LED Strip

User can custom color and light effect of the LED strip to indicate status when the button is pressed.

Button upgrade, feel the beauty of touch

The frosted surface gives you a delicate touch feeling. Special silicone material added inside the button makes the operation experience more elastic.



Note : The LED Indicator will only flicker when the button is pressed or pairing status.

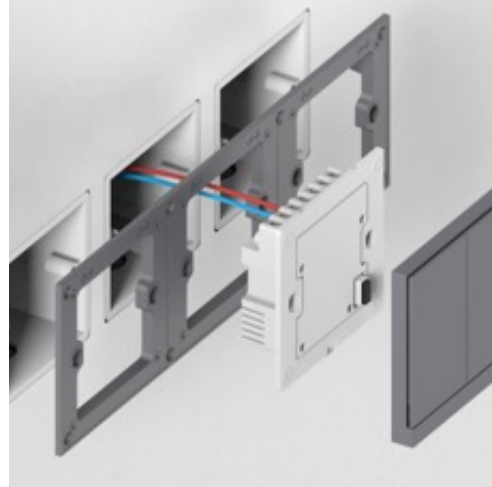
02 UNDERSTAND YOU

User-friendly upgrade



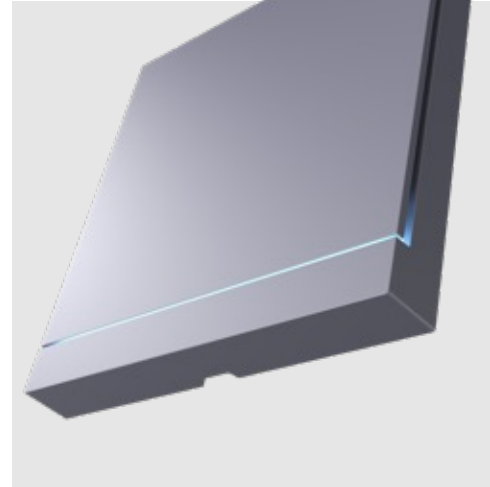
Get the Beauty of Touch

The frosted surface gives you a delicate touch feeling. Special silicone material added inside the button makes the operation experience more elastic.



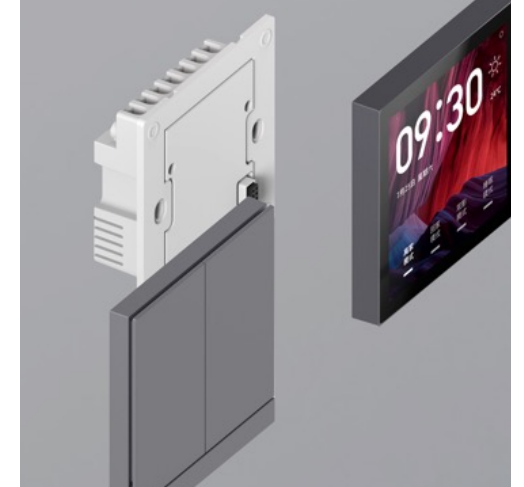
Adapts to Perfectline Plate

With the perfectline plate, we can allow the aligning of multiple switches and sockets in a perfectly straight, evenly-spaced line.



DIY Magic LED Strip

User can custom color and light effect of the LED strip to indicate status when the button is pressed.



One Base to Fit Multiple Panels

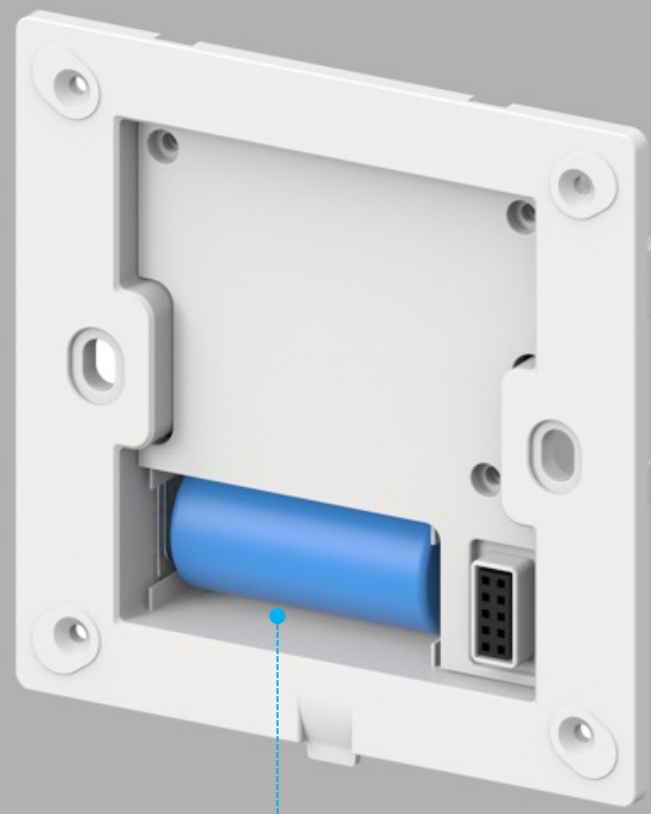
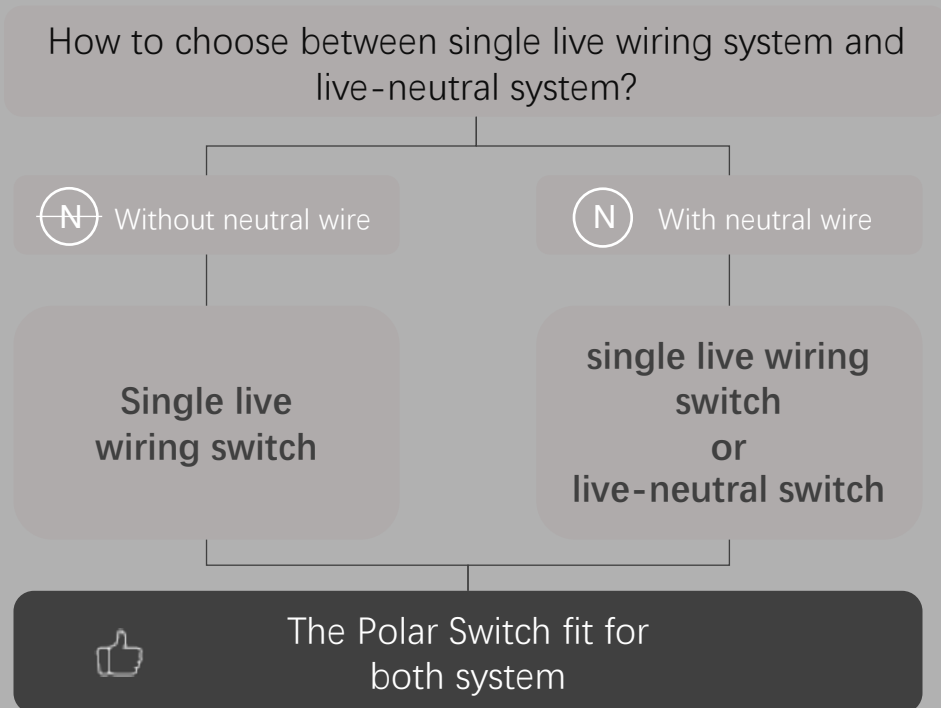
It shares the same base with Nature Series. You just need to install one kind of 86 base for your whole house, then match the panel or switch you like later.

03 QUALITY WITH PRIDE

Upgrade with no need of external wiring

Designed with 16A magnetic latching relay,
let the switch keep unglued even after **38880** times' switches

Testing : $1.15\text{W}(\text{Downlight}) \times 12 + \text{LifeSmart BLEND Light Bulb} \times 30 = 236\text{W}$

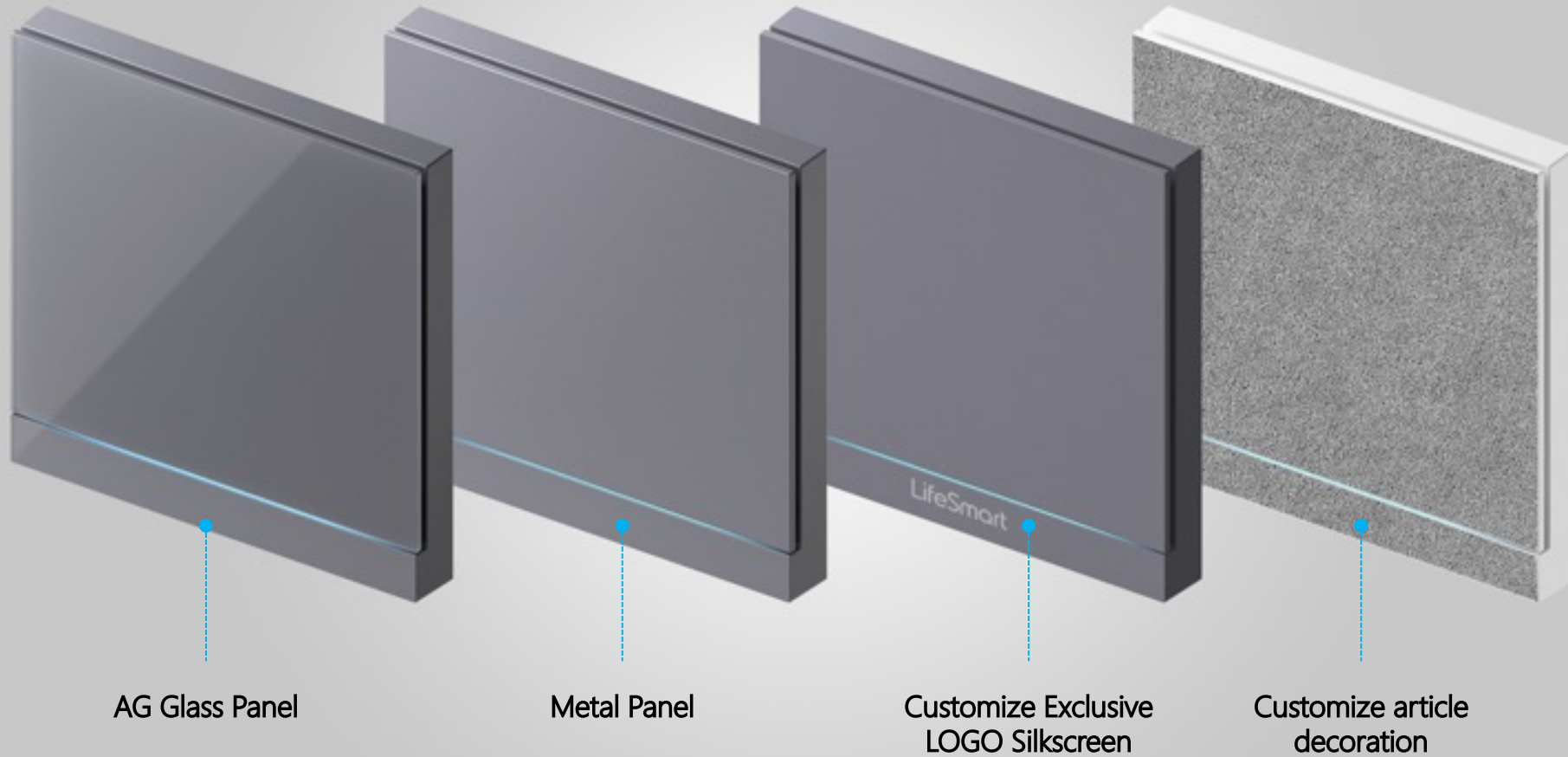


Battery 123A

Low power consumption(<1mW); long battery life(up to 5 years)

04 MORE CHOICE

Multiple customization possibilities



*Accept custom requirements when moq \geq 5000 pcs

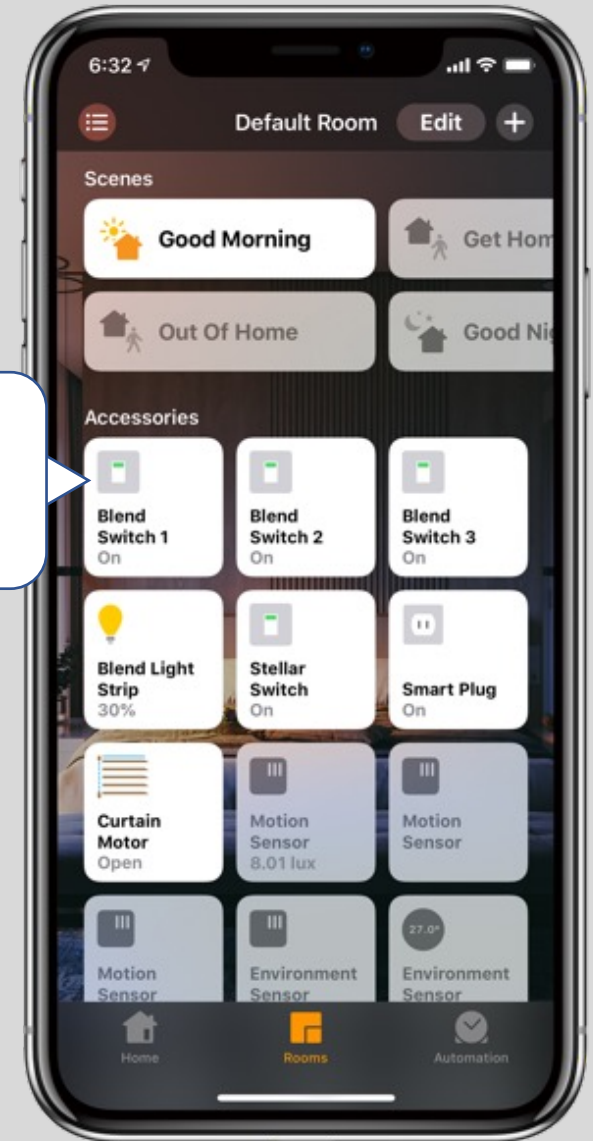
Works with HomeKit

Designed for 1.5 billion Apple users

Works with Apple HomeKit when added to Smart Station. And can integrate with 1 billion accessories from over 100 brands worldwide.



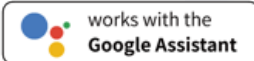
Hey, Siri!
Turn on the light



Various Control Modes

**By LifeSmart App, by voice control with
Apple HomeKit, Google Assistant, Amazon
Alexa**

The LifeSmart APP displays the status of switch in real time, and make it possible to choose the LED color by yourself. It is easy to view and control the light switch anytime, anywhere.



Communicates with Other Smart Devices

It allows you to set scenes, which enable multiple accessories to work in combination — all with a single command.

*Smart Station required

I' m Home

Turn on the lights of

Entrance

Corridor

Kitchen

Leaving Home

Turn off the lights of

Whole Home

Good Morning

Light up

Washroom

Good Night

Turn off the lights of

Whole Home

Movie Time

Light up

Colorful Strip

Turn off

Other Lights