

Colo Play User Manual

Control method

Colo Play is a cyber-themed knob controller with a knob and four mechanical keyboard-style buttons. The following are operating instructions for the knob and buttons.

Knob

Operate	Function
Short press	Enter the application Confirm selection
Clockwise rotation	Next
Anticlockwise rotation	Previous

Button

Operate	Function
Long press	Upper left: return from any interface

Function button

Operate	Function
continue	Continue the current application

reset card	Reset the current application
exit to settings	Go to settings

Start using

When using Colo Play for the first time, you need to make some basic settings, follow the startup wizard, select language and time zone, configure Wi-Fi and connect to PC.



Language

Startup wizard / Function buttons >> Language



Time zone

Startup wizard / Function buttons >> Time zone



Wi-Fi

Startup wizard / Function buttons >> Wi-Fi



Operate	Function
Rotate knob	Select character
Short press knob	Enter character
Short press button	Top left: return Top right: backspace Bottom left: switch character type Bottom right: confirm
Long press button	Upper left: return from any interface

PC connection

Download Colo Play Desktop from the Cololight website (cololight.com), or enter the URL xxx to download.



Main applications

Clocks

The device has 5 built-in clocks, which can be switched by pressing the knob in the Clocks.



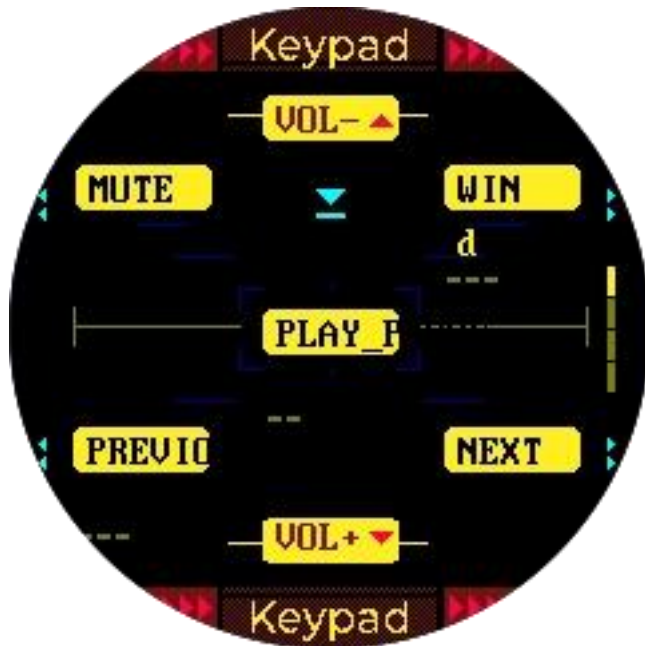




Operate	Function
Short press knob	Switch the clock
Long press button	Upper left: return from any interface

Keypad

Default



Operate	Function
Rotate knob	Left: volume - Right: volume +
Short press knob	Play / Pause
Short press button	Top left: mute Upper right: boss key (WIN+D) Bottom left: previous song Bottom right: next song
Long press button	Upper left: return from any interface*
Press and rotate knob	Switch the keypad

*The default keypad can only be returned by long pressing the upper left button.

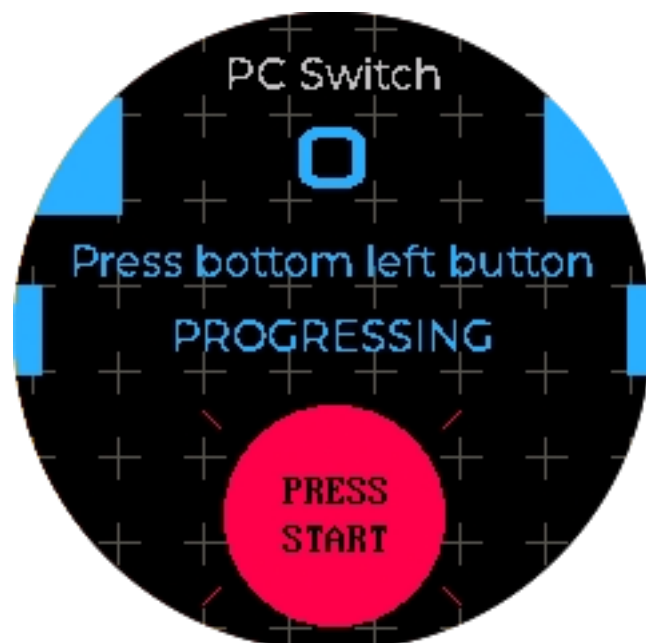
Customize

For configuration on the PC client, refer to Colo Play Desktop >> PC client configuration >> custom configuration of the keypad in this user manual.

PC Switch

[PC Switch WoL \(Wake on Lan\) Start Tutorial](#) The motherboard needs to support the WoL function, and this function should be enabled in the BIOS interface.

Enter the MAC address of the host computer. If you use the USB port of the PC for power supply, you need to set the USB port on the PC for continuous power supply.

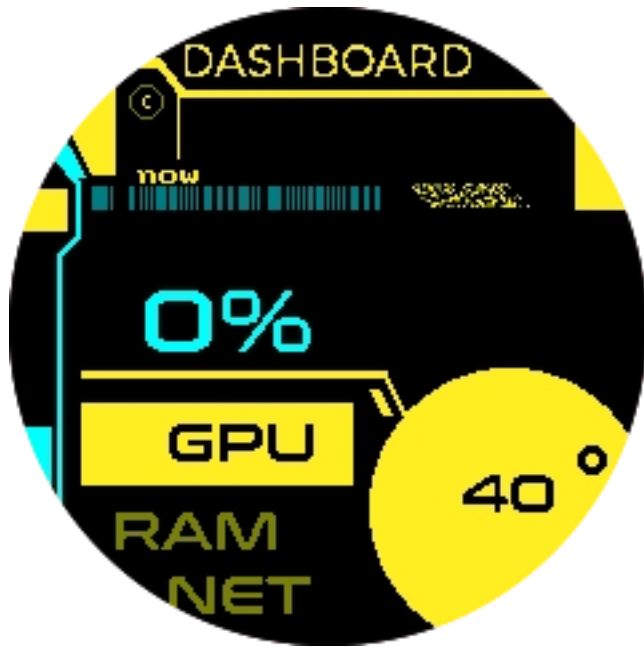
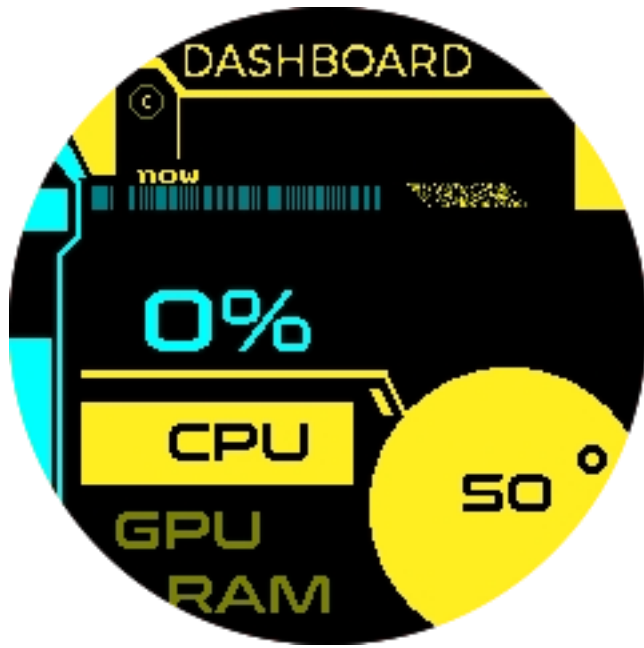


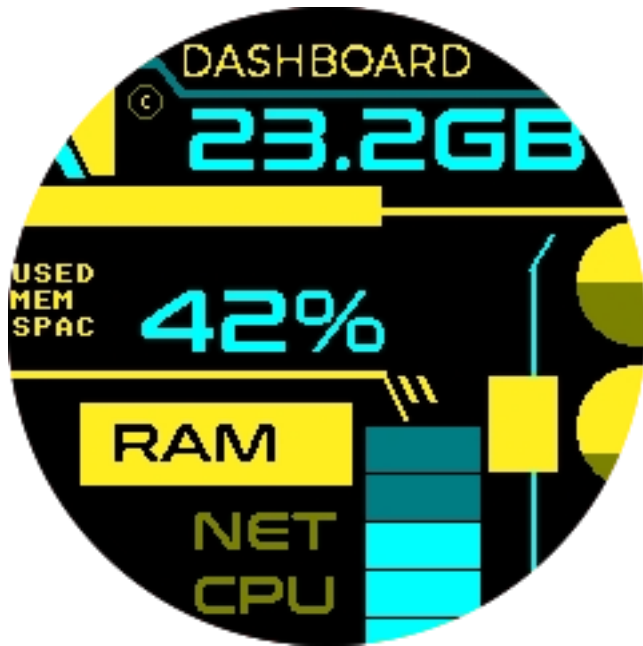
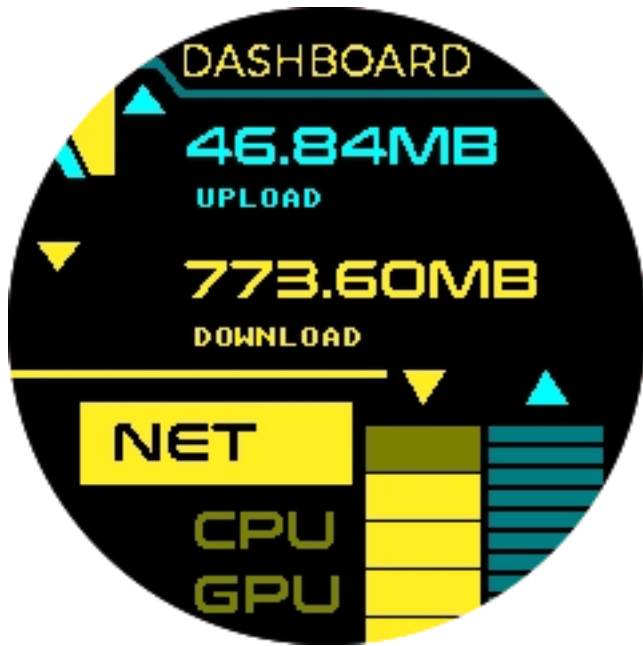


Operate	Function
Short press knob	Confirm input
Long press knob	PC switch
Short press button	Top left: return Top right: backspace Bottom left: switch character type Bottom right: confirm
Long press button	Upper left: return from any interface*

Dashboard

This feature requires Colo Play Desktop to be downloaded and kept running in the background.





Operate	Function
Short press knob	Switch to display PC dashboard
Long press button	Upper left: return from any interface

Follower Counter

Enter the Channel ID (tutorial to find Youtube ID :

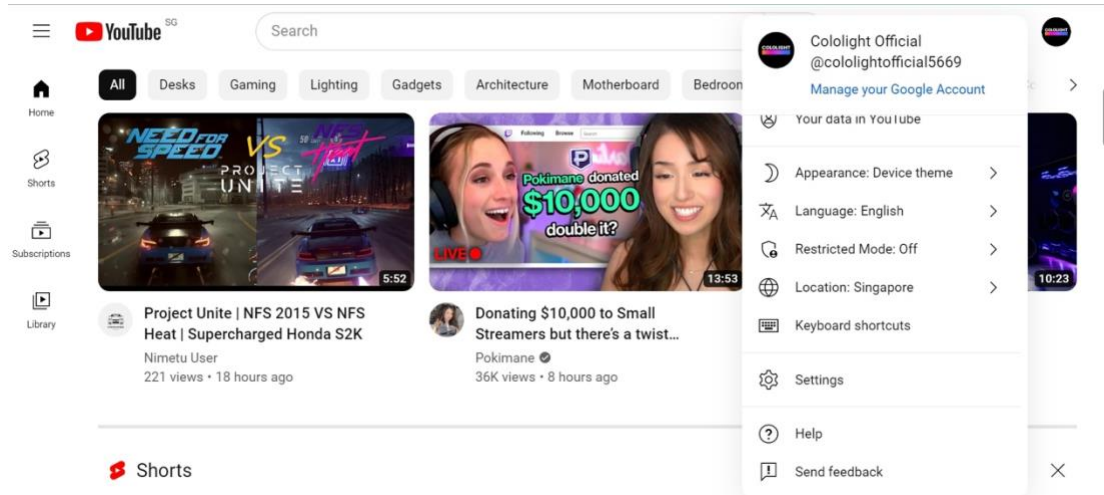
<https://www.youtube.com/watch?v=0oDy2sWPF38>) to get the number of Youtube fans, and the number of fans will be automatically updated every ten minutes.



Operate	Function
Long press knob	Edit ID
Long press button	Upper left: return from any interface

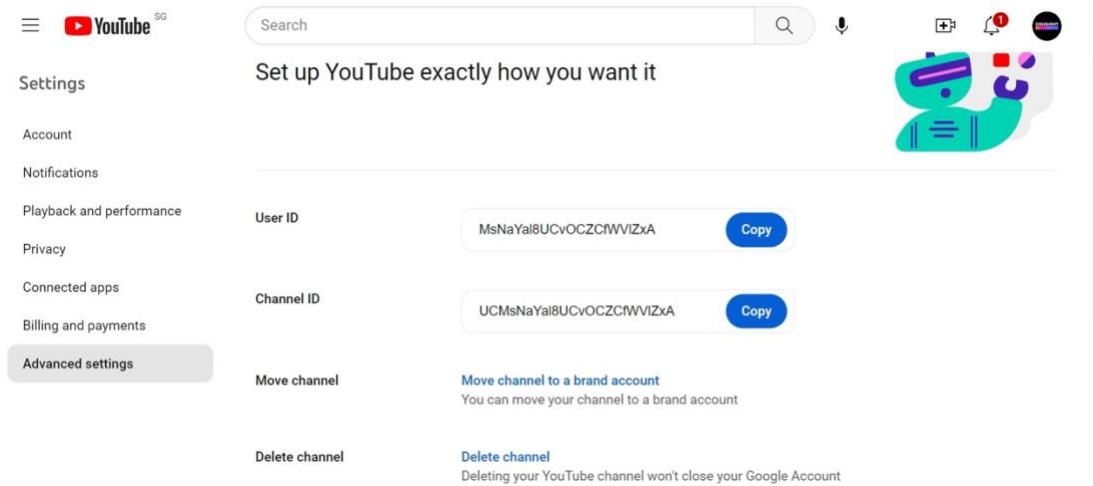
Youtube Channel ID

Log into your YouTube account, click on the profile picture at the top right of the web page, and select Settings.



On the left menu bar of the Settings page, please select Advanced Settings and your User ID and Channel ID will appear.

Note: Enter the **Channel ID** to get the number of Youtube fans



Colo Inspire



Operate	Function
Short press knob	Switch content
Long press button	Upper left: return from any interface
Function button	Switch colors

Colo Controller

The device will automatically search for all Cololight devices under the current Wi-Fi. Select one or all Cololights to control.

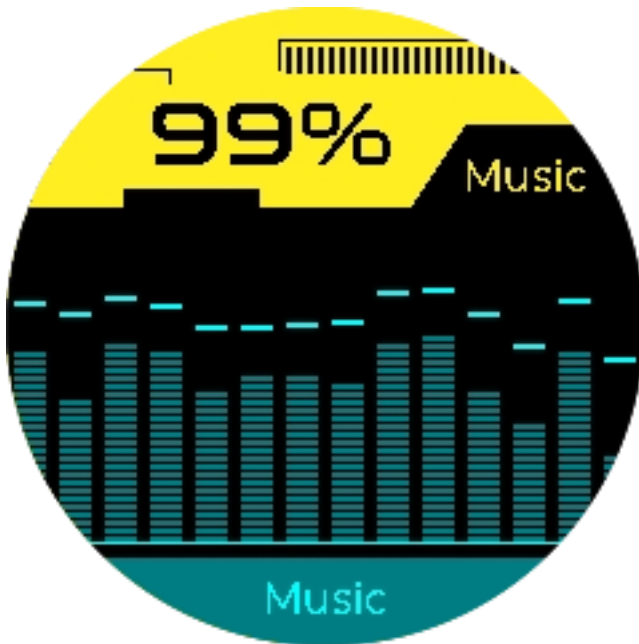


Operate	Function
Short press knob	ON/OFF
Long press knob	Enter the device list
Rotate knob	Adjust brightness
Short press button	Top left: return

	Upper right: dynamic lighting effects Bottom left: rhythm lighting effects Bottom right: monochrome lighting effects
Long press button	Bottom left: enter device listening mode Upper left: return from any interface

Device listening mode

Colo Play acts as the microphone of Cololight to collect sound, and Cololight follows the rhythm of the music received by Colo Play.



Eligible devices

Eligible devices	Cololight Pro Hexagon Light
	Cololight Plus Hexagon Light

	Cololight RGB Hexagon
	Cololight RGB Mix Light Pro
	Cololight RGB Light Strip Pro
	Cololight RGB Triangle Light
Non-eligible device	Cololight Mix Acid

Retro games

Factory built-in retro games, you can download new games in the download interface.





Colo Play Desktop

Main functions and download methods

- Main functions of Colo Play Desktop:
 - Custom configuration of the keypad
 - PC running information acquisition
 - Wi-Fi configuration

⚠ The keypad function needs to connect the Colo Play to the USB port of the PC.

Download Colo Play Desktop from the Cololight website (cololight.com), or enter <https://cololight.com/pages/coloplay-desktop-download> to download.

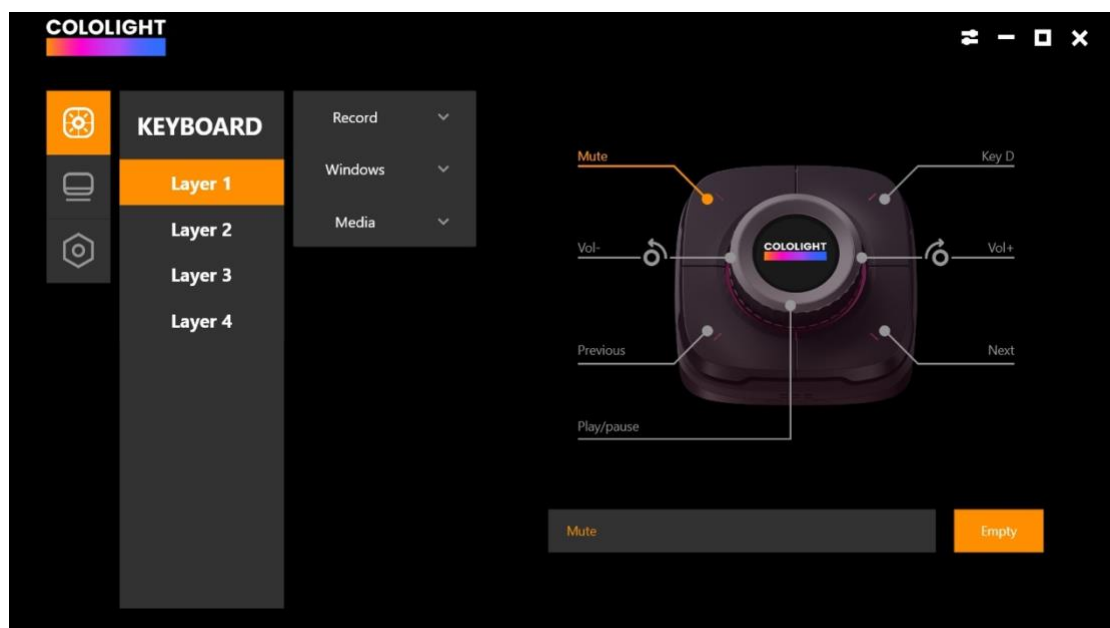
Run the coloplay_desktop.exe file.

PC client configuration

Custom configuration of the keypad

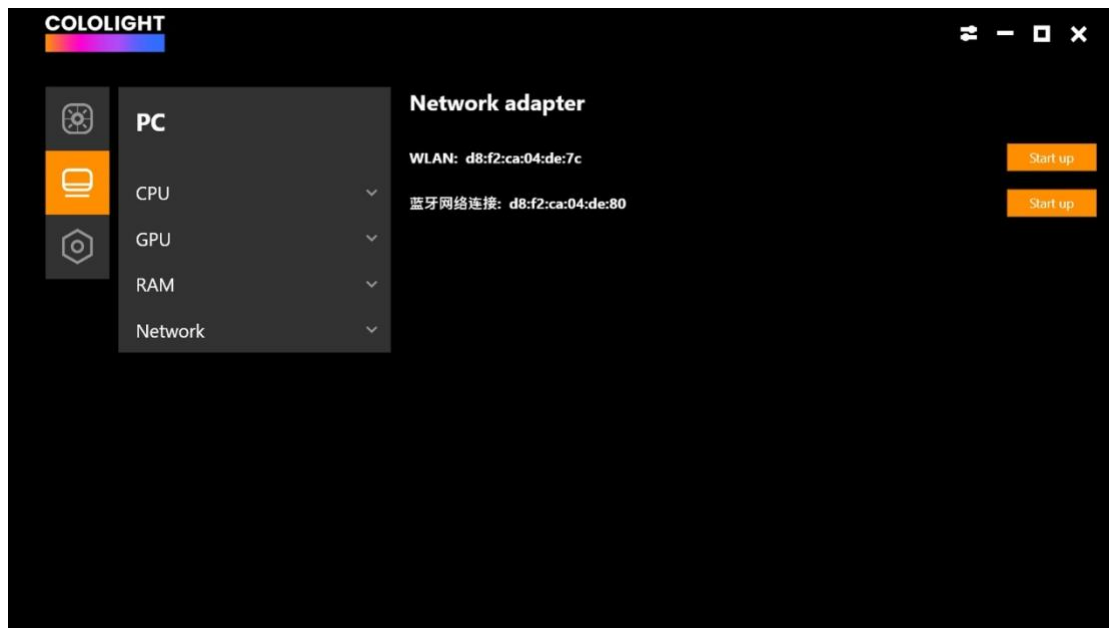
Select the corresponding button with the mouse, select the button to record, and enter the shortcut key on the keyboard, and the software will automatically obtain the entered shortcut key and send it to the device.

When Colo Play enters the keypad function, the display of the corresponding key will also change accordingly, indicating that the configuration is successful.



PC data capture

Select the second option on the left menu bar to view PC data.

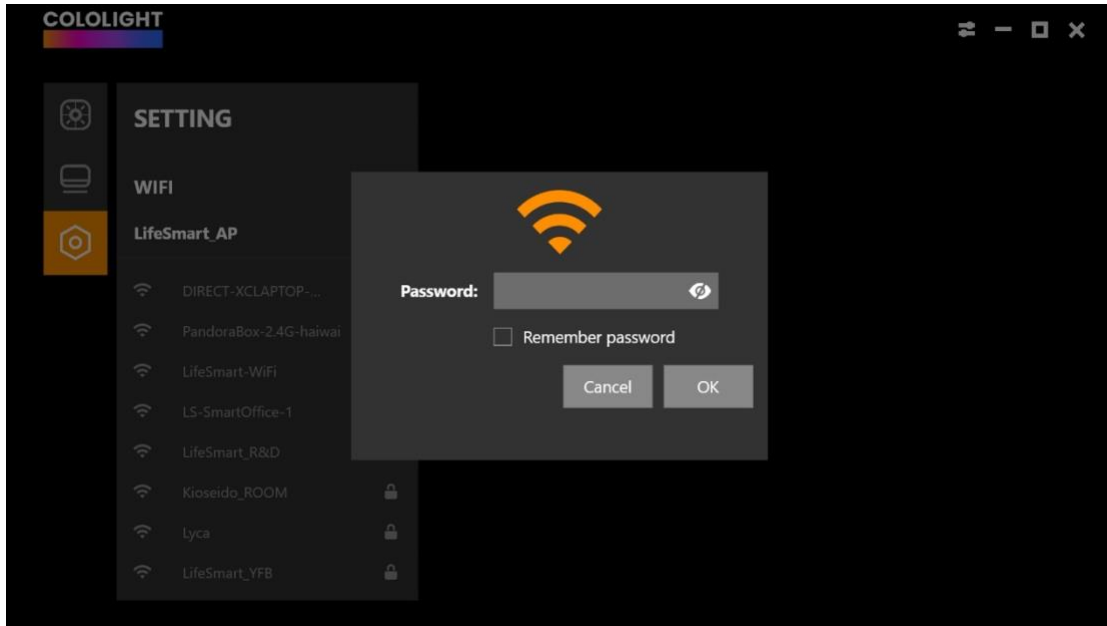


PC MAC address capture

Select the second option on the left menu bar to view the network card information and configure the MAC address of the PC Switch.

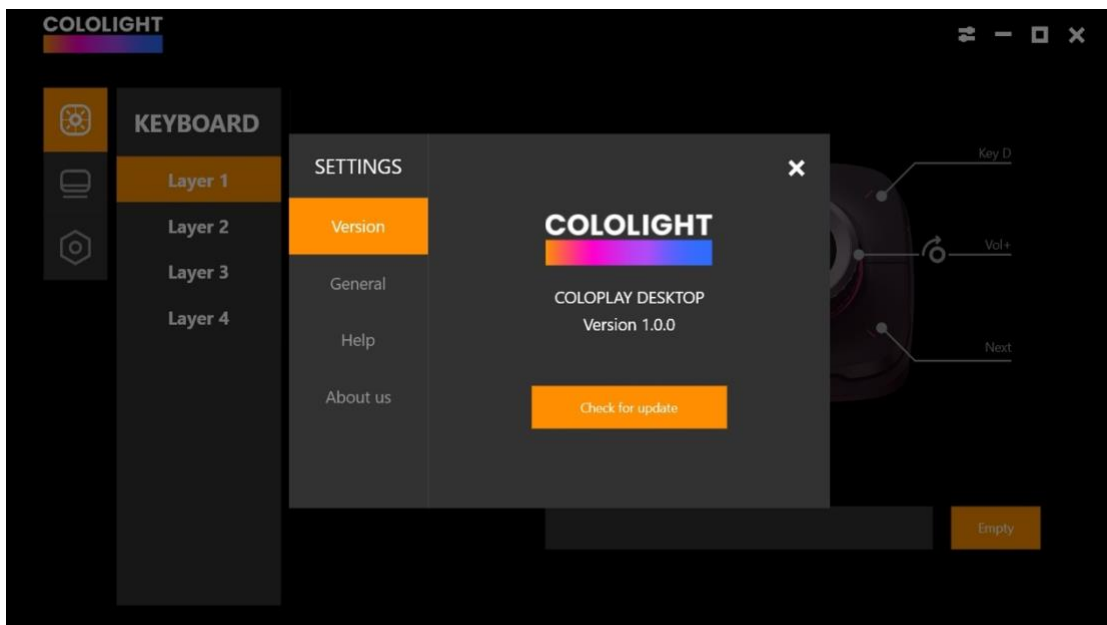
Wi-Fi configuration

Double-click to select Wi-Fi, enter the Wi-Fi password to configure Wi-Fi for Colo Play.



Settings

Click the first icon in the upper right corner to enter the settings.



Version

In the version information, you can view the current software version and update the version.

General

Select Common, you can set the language, and set the Colo Play PC client to start automatically at startup.

Help

You can view FAQs.

About us

Click to get more information about Cololight.

Colo Play settings

Short press the knob when starting up, or press the "function button" on the back of the device to select "exit to settings" to enter the setting interface. Language, network, and time zone can be set, and the specific setting steps are consistent with the start using.



Sound

Enter the sound settings, you can adjust the volume and turn on and off the follower prompt tone sound.

Backlight

Enter the backlight setting to adjust the brightness of the screen.

Keylamp

Enter the button light setting, you can change the RGB lighting effect, brightness, and control the on/off of the RGB lighting effect.

App Order

Enter the app order interface, you can view the apps on the current home page, change the order, replace or remove the apps on the home page.

Download

Enter the download interface, you can download and update more supported applications. If you want to add it to the homepage, please set it in the function button >> app order.

App List

Enter the app list, view the currently downloaded applications, and delete them.

About

Enter About, you can view the version, device MAC address, SSID, IP address, restore, empty the file system, and reboot. Select the version to check and upgrade the device.

PC Switch WoL (Wake on Lan)

Start Tutorial

Colo Play PC switch relies on WoL (Wake on Lan) technology to achieve one-key startup of PC

- PC motherboard is required to support WoL function
- The PC must be plugged in with a network cable
- To use the WOL function, the 220V power supply cannot be disconnected from the computer
- Colo Play is connected to the same Wi-Fi as the PC

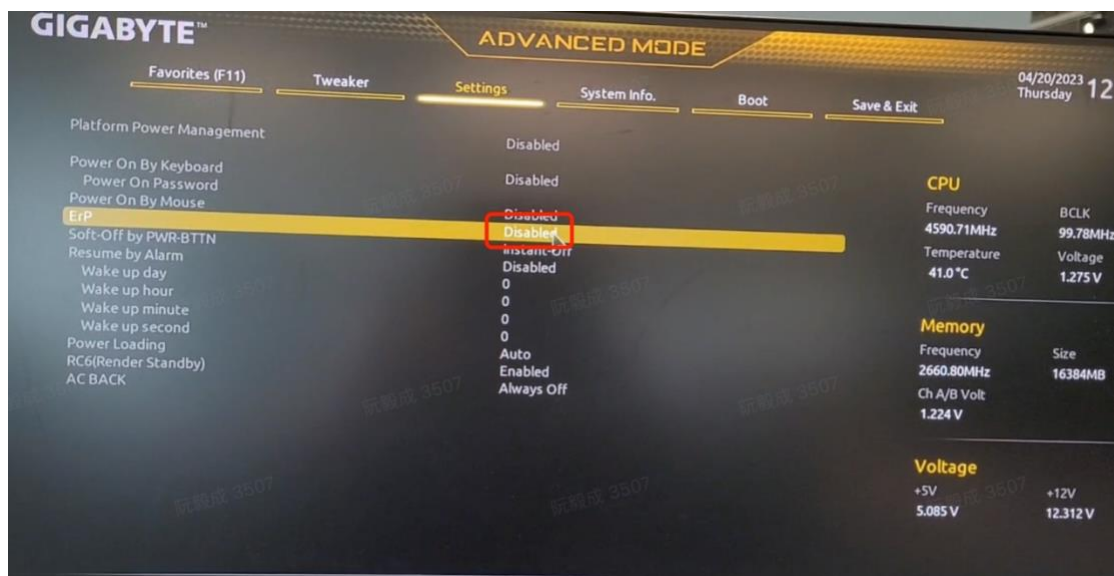
Enter the physical address (MAC address) of the network card of the PC in the Colo Play one-button power-on function, and then it can be powered on through the PC switch function.

Note: Macbooks are not supported

GIGABYTE :

Take the GIGABYTE motherboard as an example, the GIGABYTE motherboard starts the WoL tutorial:

1. Check whether your motherboard model supports WoL function on GIGABYTE official website or directly search your motherboard brand model + WOL to check <https://www.gigabyte.com/us/Support/FAQ/2657>
2. Turn off the ErP function in the motherboard BIOS menu and turn on the RTC function



Yes, it supports Wake on LAN. To enable it, please go to BIOS setting > [Advanced] > [Onboard Device Configuration] to setup [RTC SUPPORT] option.

ASUS :

<https://www.asus.com/US/support/FAQ/1045950>

How to verify that a host has been successfully WoL:

After the setting is complete, it is recommended to use a third-party WoL app to test and verify whether the WoL function has been turned on

correctly. If you can wake up your computer through your mobile phone, please go back to the beginning of this article to ensure that the conditions have been met, and enter the mac address on Colo play. One-button boot operation can be completed;

Android can use the Wake on LAN app to authenticate:



Apple can use the following App, or any app that supports wol function for verification:



Wake Me Up - Wake-on-LAN 4+

Wake your computer up

[Thomas Di Meco](#)

★★★★★ 4.5 • 66 Ratings

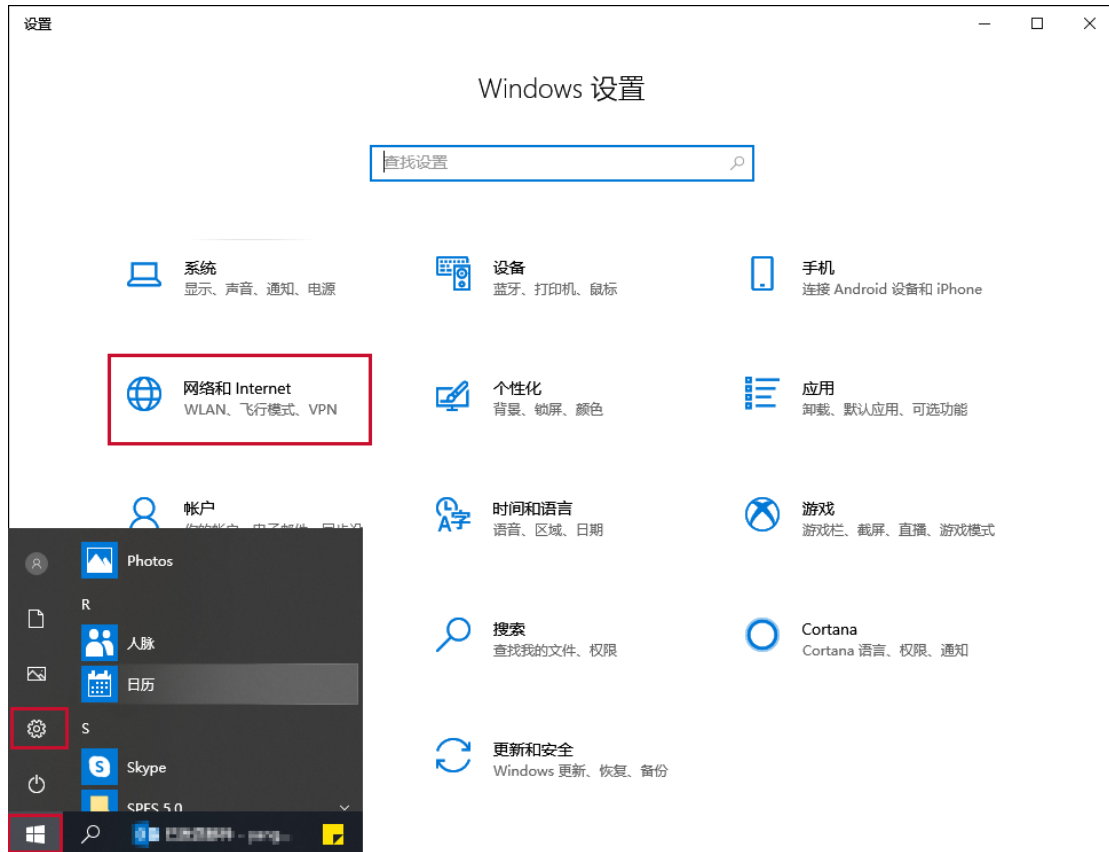
Free

<https://apps.apple.com/us/app/wake-me-up-wake-on-lan/id1465416032>

Appendix:

Check PC MAC address

1. Click the **Windows** icon > **Settings** icon, select **Network and Internet**.



2. Select **status** and click **View Network Properties**.



3. Find the content described as the network card model, and check the **physical address** below is the MAC address.

